



# SKIM EAR

FW 26





#LIVETOSKI

**CONTENTS:**

|                                  |      |
|----------------------------------|------|
| MEN SKIWEAR - CONCEPT 1.1        | P.5  |
| MEN SKIWEAR - CORE 1.2           | P.12 |
| MEN SKIWEAR - ALL MOUNTAIN 1.3   | P.26 |
| WOMEN SKIWEAR - CORE 2.1         | P.34 |
| WOMEN SKIWEAR - ALL MOUNTAIN 2.2 | P.48 |
| KIDS SKIWEAR 3                   | P.56 |
| RACING KIT 4                     | P.62 |
| SPORTSWEAR 5                     | P.70 |
| ACCESSORIES 6                    | P.84 |
| FABRICS/TECHNOLOGIES 7           | P.94 |



# MEN SKIWEAR 01

FW 26

# HERO PRODUCT

## TARGET USER

Crafted for expert skiers and innovation seekers, this hybrid 2-in-1 jacket redefines versatility. The new Quantum Jacket combines the protection of a shell and the warmth of an insulated layer and it is made for those who seek lightness, freedom, and innovation.

## DESIGN

The new Quantum Jacket blends lightness and protection through a hybrid 2- and 3-layers design. Refined details complete a functional piece built for peak performance.

## BENEFITS

Quantum Jacket delivers maximum lightness and performance, reducing bulk and enhancing mobility. It offers exceptional warmth in cold while remaining highly breathable as temperatures rise. A perfect synergy of function and elegance.



QUANTUM JACKET

## 1.1 CONCEPT

WHERE TECHNOLOGY AND CREATIVITY CONVERGE TO DELIVER FORWARD-THINKING SOLUTIONS. A LINE THAT REDEFINES PERFORMANCE THROUGH PURPOSEFUL EXPLORATION.



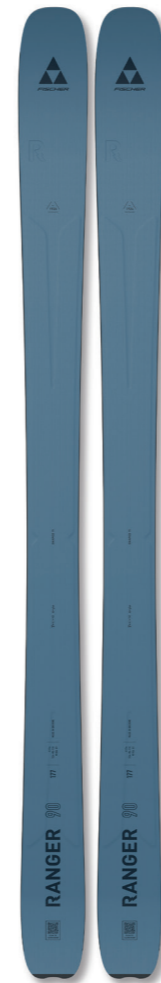
# HERO LOOK



COOL EVO  
BEANIE



FLEX JACKET



QUANTUM JACKET



PERFORMANCE  
SKIGLOVES



QUANTUM PANTS



ALPINE COMFORT  
SKISOCKS

# QUANTUM JACKET

AFMFR06020



PBPB99  
G79726  
A.BLUE-BLACK



999999  
G79626  
BLACK-BLACK

MEN SKIWEAR - CONCEPT

# QUANTUM PANTS

AFMFR16014



PBPB99  
G79926  
A.BLUE-BLACK



999999  
G79826  
BLACK-BLACK

MEN SKIWEAR - CONCEPT

## FABRIC



55%polyester 45%recycled polyester

## INSULATION



100%recycled Thindown Hybrid fabric 45gsm for body  
100%recycled polyester 40gsm for sleeve

## LINING

100%polyester - snow gaiter 100%nylon

## SIZES RANGE

S-3XL

## FEATURES



- A unique combination of 2-layer and 3-layer fabrics
- Natural down that provides excellent thermal insulation and lightweight comfort
- Exclusive Logo Patch Feature
- Evotexx® logo
- YKK waterproof zippers
- Taped seams
- Fixed hood with cohesive adjustment
- Black logo prints
- Overlay film details
- Velcro cuff adjustments and lycra cuff
- Hand and chest pocket
- Mobile life pocket
- Ventilation zippers
- Ski pass pocket
- Inside zippered pocket
- Body mapping inside construction
- Inner 3D mesh
- Fixed snow gaiter
- Goggle cloth

## FABRIC



55%polyester 45%recycled polyester

## INSULATION



100%recycled polyester 40gsm

## LINING

100%polyester - snow gaiter 100%nylon

## SIZES RANGE

S-3XL

## FEATURES



- A unique combination of 2-layer and 3-layer fabrics
- Exclusive Logo Patch Feature
- YKK waterproof zippers
- Taped seams
- Hand pockets
- Black prints
- Detachable suspenders
- Adjustable waist
- Reinforced leg end
- Snow gaiter at leg end
- Laminated belt loops and cuff adjustment

# KEY PRODUCT

## TARGET USER

Created for regulars and expert skiers who live the precision of on-piste performance. The RC4 Jacket speaks to those who seek racing-inspired details and the authentic DNA of alpine competition.

## DESIGN

The RC4 line has been completely redesigned, giving a fresh and modern identity to one of Fischer's icons. Tradition meets innovation through sharper lines, refined details, and a more dynamic, distinctive silhouette.

## BENEFITS

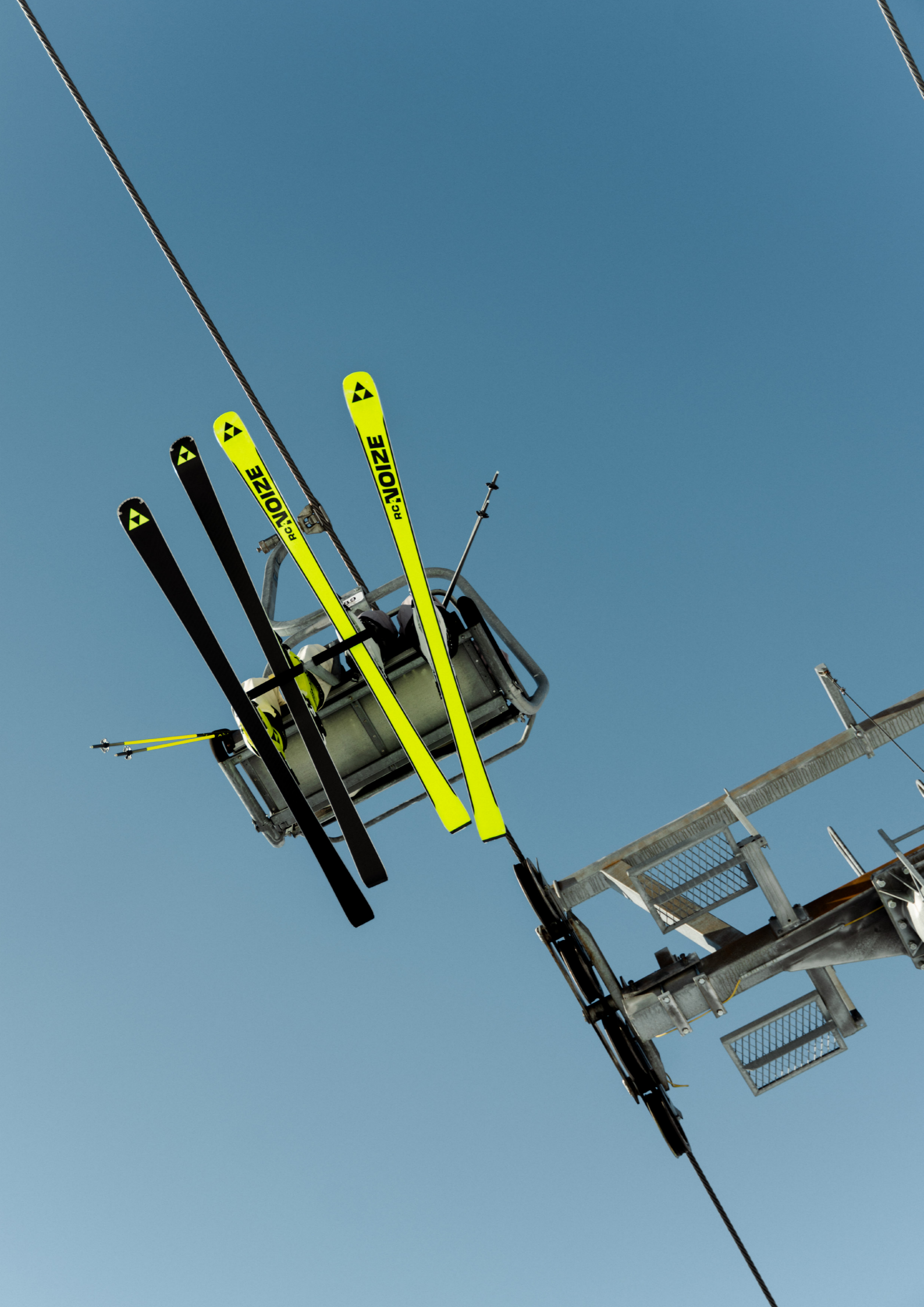
RC4 embodies the true racing spirit, merging emotion, technology, and performance. Our 20K/20K membrane ensures outstanding waterproof protection and high breathability for ultimate comfort on the slopes.



RC4 JACKET

## 1.2 CORE

THE PURE ESSENCE OF ON-PISTE SKIING. CELEBRATE PRECISION, CONTROL, AND PERFORMANCE THROUGH GARMENTS CRAFTED FOR THOSE WHO CHASE PERFECTION ON GROOMED SLOPES.



# KEY LOOK



LOGO REVERSIBLE EVO  
BEANIE



FLEX JACKET



RC4 JACKET



RC4  
SKIGLOVES



RC4 PANTS



ALPINE COMFORT  
SKISOCKS

# RC4 JACKET

AFMFR06016

MEN SKIWEAR - CORE



JVJV99  
G70126  
F. YELLOW-BLACK



999999  
G70026  
BLACK



OZOZ0Z  
G70226  
R.BLUE



JZJZJZ  
G70326  
RED



NFNF99  
G70426  
P.GREEN-BLACK

## FABRIC



55%polyester 45%recycled polyester  
Evotexx® 2 way stretch  
Waterproofness 20000 mm  
Breathability 20000g/m2/24h

## INSULATION



50%polyester 50%recycled polyester 80gsm Wilson ECO  
for body, sleeves, and hood

## LINING

100%polyester - snowgaiter100% nylon

## SIZES RANGE

S-3XL

## FEATURES



- Evotexx® + RC4 logo carbon tape
- YKK waterproof zippers
- Taped seams
- Detachable hood with cohesive adjustment
- Laser-cut details on collar
- Embossed protection on shoulders
- Black logo prints
- Overlay film details
- Velcro cuff adjustments and lycra cuffs
- Hand and chest pockets
- Mobile life pocket
- Ventilation zippers
- Ski pass pocket
- Inside zipper pocket
- Body mapping inside construction
- Inner 3D mesh
- Silver heat lining
- Fixed snow gaiter
- Goggle cloth

# RC4 PANTS

AFMFR16011

MEN SKIWEAR - CORE



JVJV99  
G70626  
F. YELLOW-BLACK



JV9999  
G70726  
F. YELLOW-BLACK-BLACK



SHORT  
AFMFR16017  
G70926

999999  
G70526  
BLACK



NF9999  
G70826  
P.GREEN-BLACK-BLACK

## FABRIC



55%polyester 45%recycled polyester  
Evotexx® 2 way stretch  
Waterproofness 20000 mm  
Breathability 20000g/m2/24h

## INSULATION



50%polyester 50%recycled 40gsm Wilson ECO

## LINING

100%polyester - snowgaiter 100%nylon

## SIZES RANGE

S-3XL

## FEATURES



- Evotexx® logo + RC4 logo carbon tape
- YKK waterproof zippers
- Taped seams
- Hand pockets
- Black prints
- Detachable suspenders
- Adjustable waist
- Reinforced leg end
- Snow gaiter at leg end
- Laminated belt loops and cuff adjustment

# ALPINE FUSION ECO-DOWN JACKET

AFMFR06017

MEN SKIWEAR - CORE



999999  
G71026  
BLACK



NFNFN  
G71326  
P.GREEN



BKBK BK  
G71226  
NAVY



PYPYPY  
G71126  
GREY DENIM

EVOTEXX<sup>®</sup> TWILL



63%nylon 32%polyester 5%elastan  
Evotexx<sup>®</sup> 2 way stretch  
Waterproofness 20000 mm  
Breathability 20000g/m2/24h

AFMFR06028

## FABRIC



55%polyester 45%recycled polyester  
Evotexx<sup>®</sup> 2 way stretch  
Waterproofness 20000 mm  
Breathability 20000g/m2/24h

## INSULATION



100%polyester 235g Wilson ECO down for body, sleeves and hood

## LINING

100%polyester - snow gaiter 100%nylon

## SIZES RANGE

S-3XL

## FEATURES



- Evotexx<sup>®</sup> logo
- YKK waterproof zippers
- Taped seams
- Detachable hood with adjustment
- Black logo prints
- Velcro cuff adjustments and lycra cuffs
- Embossing logo print on cuffs
- Hand and chest pockets
- Ventilation zippers
- Ski pass pocket
- Padded insulation inside
- Inside zipper pocket
- Body mapping inside construction
- Fixed snow gaiter
- Goggle cloth

# RUSH JACKET

AFMFR06015

MEN SKIWEAR - CORE



999999  
G71526  
BLACK



JVJVJV  
G71626  
F.YELLOW



MEMEME  
G71926  
C.BEIGE



OZOZOZ  
G71826  
R.BLUE



AYAYAY  
G71726  
DENIM

EVOTEXX<sup>®</sup> TWILL



63%nylon 32%polyester 5%elastan  
Evotexx<sup>®</sup> 2 way stretch  
Waterproofness 20000 mm  
Breathability 20000g/m2/24h

AFMFR06029



JZJZJZ  
G72026  
RED

## FABRIC



55%polyester 45%recycled polyester  
Evotexx<sup>®</sup> 2 way stretch  
Waterproofness 20000 mm  
Breathability 20000g/m2/24h

## INSULATION



50%polyester 50%recycled polyester 80gsm Wilson ECO for body, sleeves, and hood

## LINING

100%polyester - snow gaiter 100%nylon

## SIZES RANGE

S-3XL

## FEATURES



- Evotexx<sup>®</sup> logo
- Waterproof zippers
- Taped seams
- Black logo prints
- Velcro cuff adjustments and lycra cuffs
- Hand pockets
- Ventilation zippers
- Ski pass pocket
- Inside zipper pocket
- Body mapping inside construction
- Fixed snow gaiter

# PREMIER PANTS

AFMFR16006



NFN99  
G72326  
P.GREEN-BLACK



999999  
G72724  
BLACK



JVJV99  
G72824  
F.YELLOW-BLACK



BK BK99  
G72925  
NAVY-BLACK



MEME99  
G72226  
BEIGE-BLACK

MEN SKIWEAR - CORE

# PREMIER PANTS

AFMFR16008

SHORT



999999  
G73224  
BLACK

AFMFR16007

FULL ZIP



999999  
G73324  
BLACK

MEN SKIWEAR - CORE

## FABRIC



55%polyester 45%recycled polyester  
Evotexx® 2 way stretch  
Waterproofness 20000 mm  
Breathability 20000g/m2/24h

## INSULATION



50%polyester 50%recycled 40gsm Wilson ECO

## LINING

100%polyester - snowgaiter100%nylon

## SIZES RANGE

S-3XL

## FEATURES



- Evotexx® logo
- YKK waterproof zippers
- Taped seams
- Hand pockets
- Black prints
- Detachable suspenders
- Adjustable waist
- Reinforced leg end
- Snowgaiter at leg end
- Laminated belt loops, pocket flap and cuff adjustment

# THERMO HYBRID JACKET

AFMFR06022



NFNFN  
G73926  
P.GREEN



OZ0Z0Z  
G73826  
R.BLUE



999999  
G73726  
BLACK

MEN SKIWEAR - CORE

# FLEX JACKET

AFMFR14012



JV9999  
G74126  
F.YELLOW-BLACK



999999  
G74026  
BLACK



OZ9999  
G74226  
R. BLUE - BLACK



NF9999  
G74326  
P.GREEN-BLACK

MEN SKIWEAR - CORE

## FABRIC



92%nylon 8%elastan

## FABRIC 2



100%recycled polyester

Slim, lightweight, soft touch material that also offers high heat insulation

## INSULATION



100%polyester 70gsm

## SIZES RANGE

S-3XL

## FEATURES



- Thermoflexx® logo
- Hand pockets with zippers
- Cord adjustable hem
- Quilted panels
- Black prints

## FABRIC



96%polyester 4%elastan 250gsm

Slim, lightweight, soft touch material that also offers high heat insulation

## SIZES RANGE

S-3XL

## FEATURES



- Thermoflexx® logo
- Hand and chest pockets with zippers
- Black prints

# CORE SHIRT

AFMFR19013

MEN SKIWEAR - CORE



JZJZJZ  
G74626  
RED



999999  
G74426  
BLACK



NFNFNF  
G74726  
P.GREEN



000000  
G74926  
WHITE



JVJVJV  
G74526  
F.YELLOW



PBPPPB  
G74826  
A.BLUE

## FABRIC



thermoflexx®

86%polyester 14%spandex 210gsm  
Thermoflexx®

Slim, lightweight, soft touch material that also offers high heat insulation.

## SIZES RANGE

S-3XL

## FEATURES



- Thermoflexx® black logo
- ½ front zipper
- Black prints



# KEY PRODUCT

## TARGET USER

For intermediate and advanced skiers who seek adventure beyond boundaries. The Ranger 3L Jacket is crafted for those who move effortlessly on and off-piste; always perfectly protected, comfortable, and ready for every mountain challenge.

## DESIGN

A bold new design direction defines the Ranger 3L Jacket. Built on a 3-layers construction, it blends technical precision with modern appeal, featuring tailored fits and gender-specific designs for enhanced comfort and performance

## BENEFITS

The Ranger 3L Jacket ensures a precise, comfortable, and performance-driven experience for every skier. The jacket delivers reliable protection, freedom of movement, and advanced functionality across diverse alpine conditions.



RANGER JACKET

## ALL MOUNTAIN

EMBRACE VERSATILITY. CHOOSE FREELY AND MOVE BETWEEN ON-PISTE AND OFF-PISTE WITH A LINE THAT DELIVERS COMFORT, PROTECTION AND PERFORMANCE IN EVERY CONDITION.

# RANGER 3-L JACKET

AFMFR06018



PBPBPB  
G72626  
A.BLUE



NONONO  
G72526  
H.GREY

MEN SKIWEAR - ALL MOUNTAIN

# RANGER 3-L PANTS

AFMFR16012



PBPBP99  
G72826  
A.BLUE-BLACK



999999  
G72726  
BLACK

MEN SKIWEAR - ALL MOUNTAIN

## FABRIC



100%polyester  
Evotexx® 2 way stretch  
Waterproofness 20000 mm  
Breathability 20000g/m2/24h

## SIZES RANGE

S-3XL

## FEATURES



- Evotexx® logo
- Waterproof zippers
- Taped seams
- Velcro cuff adjustments
- Hand and chest pockets
- Ventilation zippers
- Ski pass pocket
- Black prints
- Inside zippered pocket
- Body mapping inside construction
- Fixed snow gaiter
- Cord adjustment hood and hem

## FABRIC



100%polyester  
Evotexx® 2 way stretch  
Waterproofness 20000 mm  
Breathability 20000g/m2/24h

## SIZES RANGE

S-3XL

## FEATURES



- Evotexx® logo
- Waterproof zippers
- Taped seams
- Hand pockets
- Detachable suspenders
- Black prints
- Adjustable waist
- Reinforced leg end
- Snow gaiter at leg end
- Side ventilation zipper
- Leg end zipper

# NOMAD JACKET

AFMFR06019

MEN SKIWEAR - ALL MOUNTAIN



99PBNO  
G73026  
BLACK-A.BLUE-H.GREY



MENF99  
G73226  
BEIGE-P.GREEN-BLACK

## FABRIC



100%polyester  
Waterproofness 10000 mm  
Breathability 10000g/m2/24h

## INSULATION



50%polyester 50%recycled polyester 80gsm Wilson ECO  
for body, sleeves and hood

## LINING

100%polyester - snow gaiter 100%nylon

## SIZES RANGE

S-3XL

## FEATURES



- Evotexx® logo
- Taped seams
- Black logo prints
- Velcro cuff adjustments and lycra cuffs
- Hand pockets
- Ventilation zippers
- Ski pass pocket
- Inside zippered pocket
- Body mapping inside construction
- Fixed snow gaiter

# NOMAD PANTS

AFMFR16013

MEN SKIWEAR - ALL MOUNTAIN



PBPBP99  
G71426  
A.BLUE-BLACK



999999  
G73326  
BLACK

## FABRIC



100%polyester  
Waterproofness 10000 mm  
Breathability 10000g/m2/24h

## INSULATION



50%polyester 50%recycled 40gsm Wilson ECO

## LINING

100%polyester - snow gaiter 100%nylon

## SIZES RANGE

S-3XL

## FEATURES



- Evotexx® logo
- Taped seams
- Hand pockets
- Black prints
- Detachable suspenders
- Adjustable waist
- Reinforced leg end
- Snowgaiter at leg end
- Laminated belt loops, pocket flap and cuff adjustment

# XPLORE HOODIE

AFMFR06023

MEN SKIWEAR - ALL MOUNTAIN



999999  
G73526  
BLACK



NONONO  
G72726  
H.GREY

## FABRIC



ThermoFlex®

100%polyester

Slim, lightweight, soft touch material that also offers high heat insulation

## INSULATION



100%polyester 50gsm

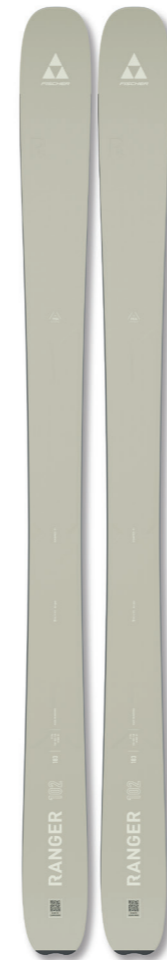
## SIZES RANGE

S-3XL

## FEATURES



- ThermoFlex® logo
- Fixed hood
- Hand pockets with zippers
- Cord adjustable hem
- Black prints



Skis image colour may differ. We reserve the right to make technical changes.

# KEY LOOK



COOL  
BEANIE



FLEX JACKET



NOMAD JACKET



PERFORMANCE  
SKIGLOVES



NOMAD PANTS



ALPINE COMFORT  
SKISOCKS



FW 26

# WOMEN SKIWEAR 02

# KEY PRODUCT

## TARGET USER

Designed for regular to expert skiers who spend most of their time on-piste, the Neva Jacket is made for the female skiers who seek high-performance materials, refined details, and a perfect balance of style and function.

## DESIGN

The Neva Jacket draws inspiration from the men's RC4, reinterpreting its lines and performance with a refined feminine touch. A fresh, modern design where tradition meets innovation through sharper contours and a dynamic, distinctive silhouette.

## BENEFITS

Neva Jacket embodies the true racing spirit, merging emotion, technology, and performance. Our 20K/20K membrane ensures outstanding waterproof protection and high breathability for ultimate comfort on the slopes.



NEVA JACKET

## 2.1 CORE

THE PURE ESSENCE OF ON-PISTE SKIING REIMAGINED FOR WOMEN. COMBINE PRECISION AND PERFORMANCE WITH A MORE DYNAMIC AND SPORTY CHARACTER. TAILORED FOR MODERN FEMALE SKIERS.



# KEY LOOK



COOL  
BEANIE



FLEX FULL ZIP WOMAN



NEVA JACKET



PERFORMANCE  
SKIGLOVES



Sample image. Colors may differ. We reserve the right to make technical changes.



NEO FORM PANTS



ALPINE COMFORT  
SKISOCKS

# NEVA JACKET

AFWFR06011

WOMEN SKIWEAR - CORE



000099  
G75026  
WHITE-BLACK



999999  
G75126  
BLACK



JZJZ99  
G75326  
RED-BLACK



NPNP99  
G75226  
L.BLUE-BLACK



TCTCTC  
G79126  
DUSTY ROSE

## FABRIC



55%polyester 45%recycled polyester  
Evotexx® 2 way stretch  
Waterproofness 20000 mm  
Breathability 20000g/m2/24h

## INSULATION



100%recycled polyester 80gsm for body, sleeves, and hood

## LINING

100%polyester - snow gaiter 100%nylon

## SIZES RANGE

XS-2XL

## FEATURES



- Evotexx® logo
- Waterproof zippers
- Taped seams
- Detachable hood
- Black logo prints
- Laser-cut details on neck
- Embossed protection on shoulders
- Velcro cuffs adjustments and lycra cuffs
- Hand and chest pockets
- Ski pass pocket
- Inside zipper pocket
- Ventilation zippers
- Body mapping inside construction
- Silver mesh
- Inner microfleece
- Fixed snow gaiter
- Goggle cloth
- Slim fit

# ECLIPSE JACKET

AFWFR06012

WOMEN SKIWEAR - CORE



PCPCPC  
G75626  
DEEPPGREEN-BLACK



999999  
G75426  
BLACK



OYOY99  
G75826  
L. BEIGE-BLACK



NPNP99  
G75726  
L.BLUE-BLACK



PYPYPY  
G75526  
GREY DENIM

EVOTEXX® TWILL



63%nylon 32%polyester 5%elastan  
Evotexx® 2 way stretch  
Waterproofness 20000 mm  
Breathability 20000g/m2/24h

AFWFR06023

## FABRIC



55%polyester 45%recycled polyester  
Evotexx® 2 way stretch  
Waterproofness 20000 mm  
Breathability 20000g/m2/24h

## INSULATION



100%recycled polyester 80gsm for body, sleeve, and hood

## LINING

100%polyester - snowgaiter 100%nylon

## SIZES RANGE

XS-2XL

## FEATURES



- Evotexx® logo
- Waterproof zippers
- Taped seams
- Detachable hood
- Black logo prints
- Velcro cuffs adjustments and lycra cuffs
- Hand and chest pockets
- Ski pass pocket
- Inside zippered pocket
- Ventilation zippers
- Body mapping inside construction
- Silver mesh
- Inner microfleece
- Fixed snow gaiter
- Goggle cloth
- Slim fit

# SKAY JACKET

AFWFR06013



JZJZ99  
G76326  
RED-BLACK



NPNPNP  
G76126  
L.BLUE



OYOYOY  
G76226  
L.BEIGE



PCPC99  
G76026  
DEEP GREEN-BLACK



009999  
G75926  
WHITE-BLACK



TCTCTC  
G76626  
DUSTY ROSE

WOMEN SKIWEAR - CORE

# NEO FORM PANTS

AFWFR16002



OYOY99  
G76926  
L.BEIGE-BLACK



000000  
G766524  
WHITE



999999  
G76224  
BLACK

SHORT  
AFWFR16006  
G76624



NPNP99  
G76826  
L. BLUE-BLACK



PYPYPY  
G76726  
GREY DENIM

EVOTEXX<sup>®</sup> TWILL



63%nylon 32%polyester 5%elastan  
Evotexx<sup>®</sup> 2 way stretch  
Waterproofness 20000 mm  
Breathability 20000g/m2/24h

AFWFR16010

## FABRIC



55%polyester 45%recycled polyester  
Evotexx<sup>®</sup> 2 way stretch  
Waterproofness 20000 mm  
Breathability 20000g/m2/24h

## INSULATION



100%recycled polyester 80gsm for body, sleeve and hood

## LINING

100%polyester - snowgaiter 100%nylon

## SIZES RANGE

XS-2XL

## FEATURES



- Evotexx<sup>®</sup> logo
- Waterproof zippers
- Taped seams
- Fixed hood
- Black logo prints
- Velcro cuffs adjustments and lycra cuffs
- Hand pockets
- Ski pass pocket
- Inside zippered pocket
- Ventilation zippers
- Body mapping inside construction
- Inner microfleece
- Fixed snow gaiter
- Goggle cloth
- Slim fit

## FABRIC



55%polyester 45%recycled polyester  
Evotexx<sup>®</sup> 2 way stretch  
Waterproofness 20000 mm  
Breathability 20000g/m2/24h

## INSULATION



50%polyester 50%recycled 40gsm Wilson ECO

## LINING

100%polyester - snowgaiter 100%nylon

## SIZES RANGE

XS-2XL

## FEATURES



- Evotexx<sup>®</sup> logo
- YKK waterproof zippers
- Taped seams
- Hand pockets
- Black prints
- Detachable suspenders
- Adjustable waist
- Reinforced leg end
- Snowgaiter at leg end
- Laminated belt loops, pocket flap and cuff adjustment

WOMEN SKIWEAR - CORE

# FLAWLESS PANTS

AFWFR16004



999999  
G76426  
BLACK



000000  
G76526  
WHITE

WOMEN SKIWEAR - CORE

# THERMO HYBRID JACKET

AFWFR06019



NPNPNP  
G77726  
L.BLUE



999999  
G77626  
BLACK



OYOYOY  
G77826  
L.BEIGE

WOMEN SKIWEAR - CORE

## FABRIC



83%polyester 17%Elastan

## FEATURES



- Thermoflexx® logo
- YKK waterproof zippers
- Adjustable Straps
- Snow gaiter at leg end
- Zippers at leg end

## SIZES RANGE

XS-2XL

## FABRIC



92%nylon 8%elastan

## FABRIC 2



100%recycle polyester.

Slim, lightweight, soft touch material that also offers high heat insulation

## INSULATION



100%polyester 50gsm

## SIZES RANGE

XS-2XL

## FEATURES



- Thermoflexx® logo
- Hand pockets with zippers
- Cord adjustable hem
- Quilted panels
- Black prints

# FLEX JACKET

AFWFR14002

WOMEN SKIWEAR - CORE



NPNP99  
G78026  
L.BLUE-BLACK



999999  
G77926  
BLACK



OY0Y99  
G78126  
L.BEIGE-BLACK

## FABRIC



96%polyester 4%elastan 250gsm

Slim, lightweight, soft touch material that also offers high heat insulation

## SIZES RANGE

XS-2XL

## FEATURES



- Thermoflexx® logo
- Hand pockets with zippers
- Black prints

# CORE SHIRT

AFWFR19002

WOMEN SKIWEAR - CORE



000000  
G78526  
WHITE



999999  
G78226  
BLACK



CVCVCV  
G78626  
FUCHSIA



NPNPNP  
G78326  
L.BLUE



OY0Y0Y  
G78426  
L.BEIGE

## FABRIC



86%polyester 14%spandex 210gsm

Slim, lightweight, soft touch material that also offers high heat insulation

## SIZES RANGE

XS-2XL

## FEATURES



- Thermoflexx® logo
- 1/2 front zipper
- Black prints

# KEY PRODUCT

## TARGET USER

For advanced and intermediate female skiers who seek freedom and adventure beyond the slopes. Designed for those who value lightness, comfort, and reliable protection in every mountain condition.

## DESIGN

The Ranger 3L Jacket introduces a bold, modern and custom design with feminine lines and a dynamic silhouette. Built on a 3-layers construction, it merges technical precision with lightness, protection, and refined comfort.

## BENEFITS

Ranger 3L Jacket ensures a precise, comfortable, and performance-driven experience for every female skier. The jacket delivers reliable protection, freedom of movement, and advanced functionality across diverse alpine conditions.



RANGER 3-L JACKET

## 2.2 ALL MOUNTAIN

EMBRACE VERSATILITY. CHOOSE FREELY AND MOVE BETWEEN ON-PISTE AND OFF-PISTE WITH A LINE THAT DELIVERS COMFORT, PROTECTION AND PERFORMANCE IN EVERY CONDITION.

# RANGER 3-L JACKET

AFWFR06018



NONONO  
G73426  
H. GREY



PBPBPB  
G73126  
A. BLUE

WOMEN SKIWEAR - ALL MOUNTAIN

# RANGER 3-L PANTS

AFWFR16009



PBPBPB  
G72426  
A. BLUE-BLACK



999999  
G72926  
BLACK-BLACK

WOMEN SKIWEAR - ALL MOUNTAIN

## FABRIC



100%polyester  
Evotexx® 2 way stretch  
Waterproofness 20000 mm  
Breathability 20000g/m2/24h

## SIZES RANGE

XS-2XL

## FEATURES



- Evotexx® logo
- Waterproof zippers
- Taped seams
- Velcro cuff adjustments
- Hand and chest pockets
- Ventilation zippers
- Ski pass pocket
- Black prints
- Inside zippered pocket
- Body mapping inside construction
- Fixed snow gaiter
- Cord adjustment hood and hem

## FABRIC



100%polyester  
Evotexx® 2 way stretch  
Waterproofness 20000 mm  
Breathability 20000g/m2/24h

## SIZES RANGE

XS-2XL

## FEATURES



- Evotexx® logo
- Waterproof zippers
- Taped seams
- Hand pockets
- Detachable suspenders
- Black prints
- Adjustable waist
- Reinforced leg end
- Snow gaiter at leg end
- Side ventilation zipper
- Leg end zipper

# NOMAD JACKET

AFWFR06022



99CVNO  
G77126  
BLACK-FUCHSIA-H.GREY



PBN099  
G77026  
A.BLUE-A.GREY-BLACK

WOMEN SKIWEAR - ALL MOUNTAIN

# NOMAD PANTS

AFWFR16007



999999  
G77226  
BLACK



NON099  
G77326  
H.GREY-BLACK

WOMEN SKIWEAR - ALL MOUNTAIN

## FABRIC



100%polyester  
Waterproofness 10000 mm  
Breathability 10000g/m2/24h

## INSULATION



50%polyester 50%recycled polyester 80gsm Wilson ECO for body, sleeves and hood

## LINING

100%polyester - snow gaiter 100%nylon

## SIZES RANGE

XS-2XL

## FEATURES



- Evotexx® logo
- Taped seams
- Black logo prints
- Velcro cuff adjustments and lycra cuffs
- Hand pockets
- Ventilation zippers
- Ski pass pocket
- Inside zippered pocket
- Body mapping inside construction
- Fixed snow gaiter

## FABRIC



100%polyester  
Waterproofness 10000 mm  
Breathability 10000g/m2/24h

## INSULATION



50%polyester 50%recycled 40gsm Wilson ECO

## LINING

100%polyester - snow gaiter 100%nylon

## SIZES RANGE

XS-2XL

## FEATURES



- Evotexx® logo
- Taped seams
- Hand pockets
- Black prints
- Detachable suspenders
- Adjustable waist
- Reinforced leg end
- Snowgaiter at leg end
- Evotexx® logo
- YKK waterproof zippers
- Taped seams
- Hand pockets
- Black prints
- Detachable suspenders
- Adjustable waist
- Reinforced leg end
- Snowgaiter at leg end
- Laminated belt loops, pocket flap and cuff adjustment

# XPLORE HOODIE

AFWFR06024

WOMEN SKIWEAR - ALL MOUNTAIN

# KEY LOOK



999999  
G77426  
BLACK



NONONO  
G77526  
H.GREY



Sample image. Colors may differ. We reserve the right to make technical changes.



NOMAD  
BEANIE



CORE SHIRT



NOMAD JACKET



PERFORMANCE  
SKIGLOVES



NOMAD PANTS



ALPINE COMFORT  
SKISOCKS

## FABRIC



100%polyester

Slim, lightweight, soft touch material that also offers high heat insulation

## INSULATION



100%polyester 50gsm

## SIZES RANGE

XS-2XL

## FEATURES



- Thermoflexx® logo
- Fixed hood
- Hand pockets with zippers
- Cord adjustable hem
- Black prints



# KIDS SKIWEAR 03

FW 26

# NOMAD JACKET

AFCFR06027



JVJV99  
G78726  
F.YELLOW



PBPB99  
G78826  
A.BLUE-BLACK



CVC99  
G78926  
FUCHSIA-BLACK



MENF99  
G79026  
BEIGE-P.GREEN-BLACK

KIDS SKIWEAR - CORE

# PREMIER PANTS

AFCFR16025



999999  
G31026  
BLACK



CVCV99  
G31126  
FUCHSIA-BLACK

FULL ZIP  
AFCFR16026



999999  
G16526  
BLACK

KIDS SKIWEAR - CORE

## FABRIC



100%polyester  
Waterproofness 10000 mm  
Breathability 10000g/m2/24h

## INSULATION



50%polyester 50%recycled 80gsm Wilson ECO for body, sleeves and hood

## LINING

100%polyester - snow gaiter 100%nylon

## SIZES RANGE

116-164

## FEATURES



- Evotexx® logo
- Taped seams
- Black logo prints
- Velcro cuff adjustments and lycra cuffs
- Hand pockets
- Ski pass pocket

## FABRIC



100%polyester  
Waterproofness 10000 mm  
Breathability 10000g/m2/24h

## INSULATION



50%polyester 50%recycled 40gsm Wilson ECO

## LINING

100%polyester - snow gaiter 100%nylon

## SIZES RANGE

116-164

## FEATURES



- YKK waterproof zippers
- Taped seams
- Hand pockets
- Black prints
- Detachable suspenders
- Adjustable waist
- Reinforced leg end
- Snowgaiter at leg end
- Laminated belt loops, pocket flap and cuff adjustment

# CORE SHIRT

AFCFR19027

KIDS SKIWEAR - CORE



PBPBPB  
G79326  
A.BLUE



999999  
G79226  
BLACK



CVCVCV  
G79426  
FUCHSIA

## FABRIC



thermoflexx®

86%polyester 14%spandex 210gsm

Slim, lightweight, soft touch material that also offers high heat insulation

## SIZES RANGE

116-164

## FEATURES



- Thermoflexx® logo
- ½ front zipper
- Black prints





# RACING KIT 04

FW 26



# RACING SUIT

## UNISEX

SUIT WITH PADS - AFNFR21001 - G15326  
 SUIT NO PADS - AFNFR21002 - V15325  
 SUIT FIS WITH PADS - AFNFR21003 - G15426  
 SUIT FIS NO PADS - AFNFR21004 - V15625

## JUNIOR

SUIT WITH PADS - AFCFR21001 - G16326  
 SUIT NO PADS - AFCFR21002 - V15915  
 SUIT FIS WITH PADS - AFCFR21003 - G16426  
 SUIT FIS NO PADS - AFCFR21005 - V15916



NHNHNH  
 F.GREY

### FABRIC

79%polyester 17%elastan 4%polyurethane

### SIZES RANGE

unisex 2XS-3XL  
 junior: 116 / 128 / 140 / 152 / 164

### FEATURES

- Racesuit with all-over print
- YKK zipper
- FIS approved fabric (only for FIS models: AFNFR21003-AFNFR21004)
- Special foam-protection inserts (only for models with protections: AFNFR21001 - AFNFR21003)

## 4 RACING KIT

EMBRACE YOUR TRUE RACING SPIRIT. THE RACE KIT IS ENGINEERED FOR COMPETITION, DELIVERING UN-COMPROMISING FUNCTIONALITY, PROTECTION, AND VERSATILITY TO MASTER EVERY TURN.

# RACING VEST

RACING KIT

UNISEX

AFNFR17001  
G15025



999999  
BLACK

JUNIOR

AFCFR17001  
G16025

## FABRIC



92%polyester 8%elastane

Slim, lightweight, soft touch material that also offers high heat insulation.

## SIZES RANGE

unisex 2XS-3XL  
junior: 116 / 128 / 140 / 152 / 164

## FEATURES



- Thermoflexx® silver logo
- YKK zippers
- White Fischer logo prints
- Wind and water resistant

# RACING SHORTS

RACING KIT

UNISEX

AFNFR11001  
G15225



999999  
BLACK

JUNIOR

AFCFR11001  
G16225

## FABRIC



92%polyester 8%elastane

slim, lightweight, soft touch material that also offers a high heat insulation.

## SIZES RANGE

unisex 2XS-3XL  
junior: 116 / 128 / 140 / 152 / 164

## FEATURES



- Soft-shell racing shorts
- Thermoflexx® silver logo
- YKK zippers
- White Fischer logo print
- Adjustable waist
- Suspender system
- Full zippers

# RAIN COAT

## 2-LAYER

AFNFR06002



999999  
G20125  
BLACK

RACING KIT



### FABRIC



100%polyester  
Waterproofness 10000 mm  
Breathability 10000g/m2/24h

### SIZES RANGE

2XS-S-I-2XL

### FEATURES



- Long Raincoat made out of extra resistant fabric
- White Fischer logo prints
- fixed hood
- 2 big side pockets
- Wind and waterproof
- Breathable



FW 26

SPORTSWEAR 05

# MOTION LOGO T-SHIRT

AFNFR17006

SPORTSWEAR - MEN



999999  
G63526  
BLACK



NHNHNH  
G63626  
F.GREY

## FABRIC



95% cotton 5% spandex

## SIZES RANGE

S-3XL

## FEATURES



- Classic roundneck t-shirt
- Short sleeves
- Big motion print on the chest
- Small live to ski print on the back
- Easy to care

# TRIANGLE T-SHIRT

AFNFR17007

SPORTSWEAR - MEN



NHNHNH  
G64826  
F.GREY

## FABRIC



95% cotton 5% spandex

## SIZES RANGE

S-3XL

## FEATURES



- Classic roundneck t-shirt
- Short sleeves
- Big Triangle logo on the chest
- Small CI-LOGO print on the back

# MINI LOGO T-SHIRT

AFNFR17011

SPORTSWEAR - MEN



999999  
G65226  
BLACK



000000  
G65126  
WHITE



NHNHNH  
G56326  
F. GREY

## FABRIC



95% cotton 5% spandex

## FEATURES



- Classic roundneck t-shirt
- Short sleeves
- Mini CI-LOGO on the chest

## SIZES RANGE

S-3XL

# FZ LOGO HOODIE

AFNFR14002

SPORTSWEAR - MEN



999999  
G65826  
BLACK



5D5D5D  
G65926  
GREY MELANGE

## FABRIC



65% cotton 35% polyester

## FEATURES



- Classic full-zip sweater with hood
- Contrast stitching on the shoulders
- Small Fischer logo embroidery on the chest
- Live to ski print in the hood
- CI-LOGO patch on the sleeves
- Metallic zipper
- 2 side pockets

## SIZES RANGE

S-3XL

# LOGO CREW NECK SWEATER

AFNFR14007

SPORTSWEAR - MEN



999999  
G67626  
BLACK



NHNHNH  
G67726  
F.GREY



5D5D5D  
G67526  
GREY MELANGE



NFNFNF  
G68026  
P.GREEN

## FABRIC



70%cotton 26%polyester 4%spandex

## SIZES RANGE

S-3XL

## FEATURES



- Classic roundneck sweat-shirt
- Contrast stitching on the shoulders
- CI-LOGO patch on the chest

# LOGO HOODIE

AFNFR14006

SPORTSWEAR - MEN



999999  
G67126  
BLACK



NHNHNH  
G67226  
F.GREY



NFNFNF  
G67426  
P.GREEN

## FABRIC



70%cotton 26%polyester 4%spandex

## SIZES RANGE

S-3XL

## FEATURES



- Classic sweat-shirt with hood
- Big Fischer logo embroidery
- 2 side pockets

# SWEAT PANTS

AFNFR16011

SPORTSWEAR - MEN



999999  
G69026  
BLACK



NHNHNH  
G69126  
F.GREY



NFNFNF  
G69326  
P.GREEN

## FABRIC



70%cotton 26%polyester 4%spandex

## SIZES RANGE

S-3XL

## FEATURES



- Classic sweat-pants
- Slim-fit
- 2 side pockets
- Fischer logo
- Small live to ski print on the back
- Easy to care

# LOGO T-SHIRT

AFWFR17001



CVCVCV  
G61226  
FUCHSIA



000000  
G61026  
WHITE



999999  
G61126  
BLACK

SPORTSWEAR - WOMEN

# MOUNTAIN HOODIE

AFWFR14004



NQNQNG  
G62526  
U.COTTON



999999  
G62326  
BLACK

SPORTSWEAR - WOMEN

## FABRIC



95% cotton 5% spandex

## FEATURES



- Classic lady roundneck t-shirt
- Short sleeve
- Big Fischer print on the chest
- Triangle logo print on the sleeves
- Easy to care

## SIZES RANGE

XS-2XL

## FABRIC



70% cotton 26% polyester 4% spandex

## FEATURES



- Classic lady sweat-shirt with hood
- Small mountain print on the chest
- Small Fischer logo on the back
- 2 side pockets

## SIZES RANGE

XS-2XL

# SWEAT PANTS

AFWFR16008

SPORTSWEAR - WOMEN



999999  
G62926  
BLACK



NQNQNQ  
G62726  
U.COTTON

## FABRIC



70%cotton 26%polyester 4%spandex

## SIZES RANGE

XS-2XL

## FEATURES



- Classic lady sweat-pants
- Slim-fit
- 2 side pockets
- Fischer logo
- Small live to ski print on the back
- Easy to care



ACCESSORIES 06  
FW 26



# LOGO REVERSIBLE EVO

## BEANIE

AFNFA08015



JV9999  
G33226  
FISCHER YELLOW/BLACK

| MATERIAL    | SIZES RANGE | FEATURES                                                                                                                                                                     |
|-------------|-------------|------------------------------------------------------------------------------------------------------------------------------------------------------------------------------|
| 100%acrylic | UNI         | <ul style="list-style-type: none"> <li>• Knitted logo</li> <li>• Double knitted</li> <li>• Wearable at both sides</li> <li>• Different logos for outer and inside</li> </ul> |

# MOUNTAIN EVO

## BEANIE

AFNFA08013



999999  
G32826  
BLACK

BKKBK  
G32626  
NAVY

| MATERIAL    | SIZES RANGE | FEATURES                                                                                                              |
|-------------|-------------|-----------------------------------------------------------------------------------------------------------------------|
| 100%acrylic | UNI         | <ul style="list-style-type: none"> <li>• Uni-beanie with microfleece innerband</li> <li>• Embroidered logo</li> </ul> |

ACCESSORIES

# NOMAD

## BEANIE

AFNFA08010



PBPBPB  
G33526  
A.BLUE

CVCVCV  
G32624  
FUCHSIA

NONONO  
G33426  
H.GREY

| MATERIAL                         | SIZES RANGE | FEATURES                                                                                                |
|----------------------------------|-------------|---------------------------------------------------------------------------------------------------------|
| 47%viscose 30%nylon 23%polyester | UNI         | <ul style="list-style-type: none"> <li>• Uni-beanie with pom-pom</li> <li>• Logo woven label</li> </ul> |

# COOL EVO

## BEANIE

AFNFA08011



BKKBK  
G32126  
NAVY

000000  
G32226  
WHITE

NFNFN  
G32426  
P.GREEN

999999  
G32026  
BLACK

MEMEME  
G32326  
BEIGE

| MATERIAL               | SIZES RANGE | FEATURES                                                                                                                                  |
|------------------------|-------------|-------------------------------------------------------------------------------------------------------------------------------------------|
| 50%wool 50%polyacrilic | UNI         | <ul style="list-style-type: none"> <li>• Beanie with turn-up brim</li> <li>• Microfleece innerband</li> <li>• Logo woven label</li> </ul> |

ACCESSORIES

# TRIANGLE EVO

## HEADBAND

AFNFA08016



JV9999  
G34226  
YELLOW F-BLACK-BLACK

| MATERIAL               | SIZES RANGE | FEATURES                                                                                                                         |
|------------------------|-------------|----------------------------------------------------------------------------------------------------------------------------------|
| 50%wool 50%polyacrilic | UNI         | <ul style="list-style-type: none"> <li>• 2-colored headband</li> <li>• Melange optic</li> <li>• Microfleece innerband</li> </ul> |

ACCESSORIES

# ESSENTIAL

## CAP

AFNFA08020



999999  
G38626  
BLACK

| MATERIAL      | SIZES RANGE | FEATURES                                                                                                                           |
|---------------|-------------|------------------------------------------------------------------------------------------------------------------------------------|
| 100%polyester | UNI         | <ul style="list-style-type: none"> <li>• logo embroidery</li> <li>• Simple velcro size adjustment</li> <li>• Flat visor</li> </ul> |

ACCESSORIES

# TRUCKER

## CAP

AFNFA08017



999999  
G38026  
BLACK

| MATERIAL                                   | SIZES RANGE | FEATURES                                                                                                                                                                            |
|--------------------------------------------|-------------|-------------------------------------------------------------------------------------------------------------------------------------------------------------------------------------|
| main: 100%polyester<br>mesh: 100%polyester | UNI         | <ul style="list-style-type: none"> <li>• Logo TPU print</li> <li>• Technical mesh-insert on the back</li> <li>• Simple snap-back size adjustment</li> <li>• Curved visor</li> </ul> |

# CI-LOGO EVO FLEECE

## BANDANA

AFNFA13006



999999  
G36426  
BLACK

| MATERIAL      | SIZES RANGE | FEATURES                                                                                                                                                                    |
|---------------|-------------|-----------------------------------------------------------------------------------------------------------------------------------------------------------------------------|
| 100%polyester | UNI         | <ul style="list-style-type: none"> <li>• Multi purpose tube</li> <li>• "Retro" prints</li> <li>• Lightweight and elastic</li> <li>• Lots of application variants</li> </ul> |

# CI-LOGO EVO

## BANDANA

AFNFA13005



JV9999  
G36026  
YELLOW F-BLACK-BLACK

999999  
G36126  
BLACK



| MATERIAL      | SIZES RANGE | FEATURES                                                                                                                                                                    |
|---------------|-------------|-----------------------------------------------------------------------------------------------------------------------------------------------------------------------------|
| 100%polyester | UNI         | <ul style="list-style-type: none"> <li>• Multi purpose tube</li> <li>• "Retro" prints</li> <li>• Lightweight and elastic</li> <li>• Lots of application variants</li> </ul> |

ACCESSORIES

# PERFORMANCE MAN

## SKIGLOVES

AFNFA06006



999900  
G30126  
BLACK

| MATERIAL                                                                                                                                       | SIZES RANGE | FEATURES                                                                                                                       |
|------------------------------------------------------------------------------------------------------------------------------------------------|-------------|--------------------------------------------------------------------------------------------------------------------------------|
| shell: 95% polyester, 5% spandex<br>palm: 50%poliurethan50%polyamide<br>lining: 100%polyester<br>Insert:1 00% TPU<br>Insulation: 100%polyester | 7-12        | <ul style="list-style-type: none"> <li>• Uni-colored skigloves</li> <li>• Reinforced palm</li> <li>• Velcro closure</li> </ul> |

# PERFORMANCE LADY

## SKIGLOVES

AFWFA06003



999999  
G30426  
BLACK

| MATERIAL                                                                                                                                       | SIZES RANGE | FEATURES                                                                                                                               |
|------------------------------------------------------------------------------------------------------------------------------------------------|-------------|----------------------------------------------------------------------------------------------------------------------------------------|
| shell: 95% polyester, 5% spandex<br>palm: 50%poliurethan50%polyamide<br>lining: 100%polyester<br>Insert: 100% TPU<br>Insulation: 100%polyester | 5-9         | <ul style="list-style-type: none"> <li>• Uni-colored women's skigloves</li> <li>• Reinforced palm</li> <li>• Zipper closure</li> </ul> |

ACCESSORIES

# RC4 SKIGLOVES

AFNFA06005



999999  
G30026  
BLACK

## MATERIAL

Shell: 100%leather  
Palm: 50%poliurethan 50%polyamide  
Lining: 100%polyester  
Insulation: 100%polyester

## SIZES RANGE

7-12

## FEATURES

- Uni-colored skigloves
- Water repellent
- Knuckle protection
- Velcro closure
- Better grip by silicone prints on palm

ACCESSORIES

# PERFORMANCE PRO EVO

## SKISOCKS

AFNFA24006



999999  
G39226  
BLACK

## MATERIAL

33%merino wool 30%polyamide 17%acrylic  
17%17% polyester (Primaloft®) 3%Lycra®

## SIZES RANGE

35-37 38-40 41-43 44-46 47-49

## FEATURES

- Skisocks in knee-length
- Extralight knitting construction
- PRIMALOFT yarn in feet cares for warmth

ACCESSORIES

# ALPINE COMFORT

## SKISOCKS

AFNFA24002



JVJVJ  
G39324  
R.GREEN



999999  
G39224  
BLACK



KHKHKH  
G39426  
L.GREY

## MATERIAL

44%polyamide 36%merino wool  
15%polypropylene 5%Lycra®

## SIZES RANGE

35-37 38-40 41-43 44-46 47-49

## FEATURES

- Skisocks in knee-length
- Thin knitting construction
- Cl-design in knit

# FABRICS AND MATERIALS



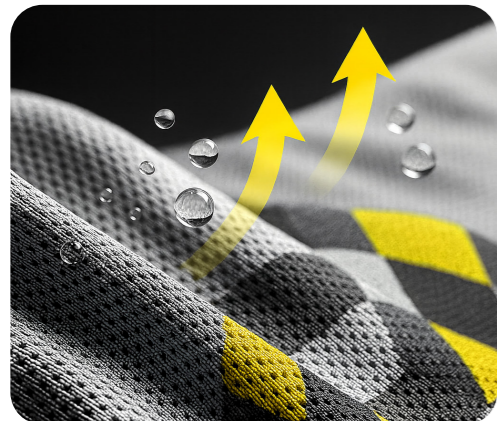
## EVOTEXX

This stretchable polyester fabric assures maximum comfort and a great range of movement. The stretchable, smart fabric membrane guarantees high performance, in addition to providing waterproof and breathability functions. Look and feel your best on the slopes with breathable, durable and wind-proof garments made for extreme weather conditions. Evox features make it ideal for snowy or rainy days, as well as for end-of-season warmer days. In FW26 collection Evox comes in two versions: 20k/20k and 10k/10k.



## EVOTEXX 3-L

This fabric consists of three layers: an external polyester layer, an internal water-resistant laminated membrane and an internal lining layer. The lamination assures a water resistance of 20.000 mm water column and at the same time keeps breathability of 20.000 g/m<sup>2</sup>/24h, making it possible to produce technical garments suitable for even the worst conditions.



## THERMOFLEXX

This thin, lightweight padding offers excellent thermal insulation with technical and waterproof materials. This microfiber padding is soft, warm, and is extremely durable in harsh weather conditions, as well as in the wash. Thermoflexx is a slimming, lightweight material that also offers a high heat insulation. Additionally, thermo ball wadding products are soft to the touch, comfortable to wear and allow freedom of movement.



## EVOTEXX TWILL by Maxland

Evox Twill is a new-generation outer fabric that combines urban style with true mountain performance. Designed for both city and slope, it delivers a refined, lifestyle look while offering the full protection of a technical ski garment. Thanks to the combination with our proprietary Evox membrane, Maxland ensures high water resistance, excellent breathability, and lasting comfort in all conditions. Its soft hand feel and contemporary texture make it ideal for jackets and pants that transition effortlessly from everyday wear to alpine adventure — uniting modern aesthetics with functional innovation.

# TECHNICAL SOLUTION AND TRIMS

## C0 Technology

Our outer layers utilize advanced C0 technology, an eco-friendly innovation that replaces traditional water-repellent treatments with a sustainable solution. By eliminating harmful perfluorinated compounds (PFCs), C0 technology offers effective water resistance while prioritizing environmental responsibility. This approach delivers long-lasting moisture protection while maintaining breathability and comfort, suitable for all weather conditions.

## Embossed Shoulders

Our garments feature specialized embossing on the shoulders, designed to enhance durability and comfort when carrying skis. This embossing is achieved by integrating a polymercore between fabric layers, acting as a cushion to optimize performance. The strategic reinforcement shields the fabric from scratches and abrasions caused by ski edges, ensuring the garment's longevity.

## Fischer Puller

The Fischer pullers offer enhanced functionality with a wider grip and the rubberized material, ensuring a firmer, smoother hold. Engineered for frequent use, the new zip pulls provide consistent and smooth operation. The innovative 'stay-down' feature keeps the zipper pullers securely in place, preventing movement during activity and enhancing overall comfort and ease.

## YKK Waterproof Zippers

Balancing elegance, strength, and resilience, YKK waterproof zippers are designed to integrate seamlessly with various fabrics, including delicate materials. These zippers not only enhance the garment's visual appeal but also offer reliable waterproofing, preventing water infiltration under challenging conditions.

# HYBRID CONSTRUCTION

The Hybrid Construction combines 3-layers uninsulated panels for freedom of movement with 2-layers Thindown-insulated zones for warmth and comfort, achieving the perfect balance of mobility, protection, and performance.



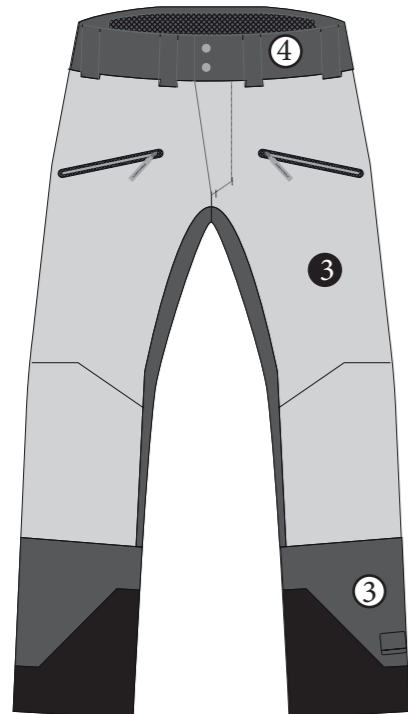
## 3-LAYERS

The 3-layers fabric sections are strategically placed in the areas of the hood, cuff, hem and bottom where the user already wears external protections, namely:

- ① helmet
- ② gloves
- ③ pants
- ④ ski-boots

## BENEFITS

This construction solution reduces bulk thus enhancing freedom of movement while ensuring waterproofness, breathability, and wind resistance.



## 2-LAYERS

The 2-layers fabric sections, combined either with Thindown insulation (jacket) or synthetic insulation (pants), are located where needed:

- ① upper body
- ② arms
- ③ legs

## BENEFITS

The 2-layers fabric with insulation sections provide warmth and comfort where required with minimal thickness.

# THINDOWN TECHNOLOGY



## 1. Features / Benefits

Thindown® is the world's first fabric made from real natural down. It combines the authentic performance of down with the versatility of a textile, delivering superior warmth, breathability, and lightness with minimal thickness. Its continuous-sheet structure prevents down migration, ensuring uniform insulation and complete design freedom for clean, technical garments.

## 2. Thindown vs Natural Down (Traditional Application)

Compared to traditional down, which requires channels and stitching to contain the fill, Thindown® allows for even heat distribution with no cold spots. It provides up to 170% more thermal insulation at the same thickness, reducing bulk while enhancing fit, comfort, and thermal efficiency. It also eliminates feather leakage and simplifies manufacturing processes.

## 3. Thindown vs Synthetic Insulation

Unlike synthetic paddings, Thindown® is made from regenerated natural down, offering the perfect balance of thermal performance, lightness, and sustainability. It delivers greater warmth with less weight, a more natural feel, and optimal moisture management. An eco-responsible and certified solution, fully traceable across its production chain.

# TECH ICONS



Fabric made with a percentage of recycled polyester to reduce environmental impact and promote the sustainable use of resources.



Garment made with eco-friendly materials or treatments, designed to minimize environmental impact and support sustainability.



Waterproof fabric that provides reliable protection against rain, snow, and moisture, keeping the body dry in all conditions.



Water-resistant zipper designed to prevent water and snow infiltration, ensuring maximum protection even in extreme weather.



Insulated structure or padding that maintains optimal body temperature and comfort in cold conditions.



Garment equipped with patches or customizable areas, ideal for logos, graphics, or team identification.



High-performance thermal padding offering superior warmth and comfort in extremely low temperatures.



Breathable material that allows moisture vapor to escape, ensuring comfort and effective temperature regulation during activity



Seams sealed with waterproof tape to prevent moisture penetration, ensuring full garment waterproofing.



Insulated pocket designed to protect mobile devices from cold temperatures and help preserve battery life.



Ergonomic hand pockets designed for comfort, functionality, and protection from the cold.



Adjustable details (cuffs, hem, hood, or waist) for a personalized and functional fit during activity.

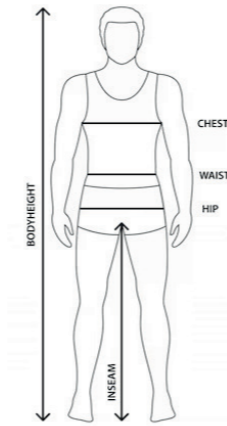


# CLOTHING SIZE TABLE

## MEASUREMENTS

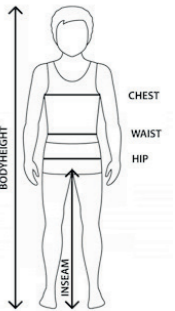
### MEN

| SIZES | XS | S  | M   | L   | XL  | 2XL | 3XL |
|-------|----|----|-----|-----|-----|-----|-----|
| CHEST | 88 | 94 | 100 | 106 | 112 | 118 | 124 |
| WAIST | 76 | 82 | 88  | 94  | 100 | 106 | 112 |
| HIP   | 90 | 96 | 102 | 108 | 114 | 120 | 126 |



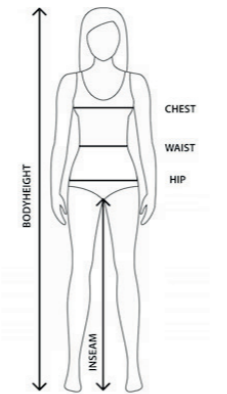
### JUNIOR

| AGE    | 6V  | 8V   | 10V | 12V  | 14V |
|--------|-----|------|-----|------|-----|
| HEIGHT | 116 | 128  | 140 | 152  | 164 |
| LENGTH | 116 | 128  | 140 | 152  | 164 |
| CHEST  | 60  | 65   | 70  | 75   | 80  |
| WAIST  | 53  | 57,5 | 62  | 67   | 72  |
| HIP    | 64  | 69,5 | 75  | 80,5 | 86  |



### WOMEN

| SIZES | XS | S  | M  | L   | XL  | 2X  | 3XL |
|-------|----|----|----|-----|-----|-----|-----|
| CHEST | 80 | 84 | 88 | 92  | 96  | 100 | 104 |
| WAIST | 64 | 68 | 72 | 76  | 80  | 84  | 88  |
| HIP   | 90 | 94 | 98 | 102 | 106 | 110 | 114 |





**SKI LIFE  
BEST PARTNER**



FW 26  
SKIWEAR